



THE AVENUE
REAL ESTATE GROUP

Proudly Presents

WS

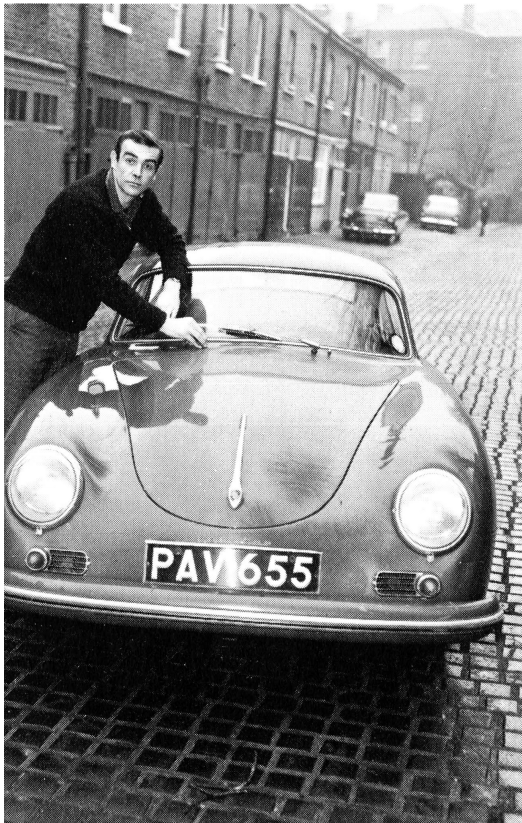
WestSide
Priory Road



THE AVENUE
REAL ESTATE GROUP

History & Famous Neighbours

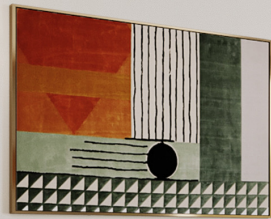
In 1958 Sean Connery (James Bond) moved right next door to this building in Wavel Mews.





THE AVENUE
REAL ESTATE GROUP





Master Bedroom

Master Bedroom

- The master bedroom benefits of a lavish bathroom with upscale features such as heated floors and an enormous shower.
- The master bedroom also faces the backyard garden and has plans for a door to be added to give direct access to the communal garden.
- The room benefits of ample covert space, and an abundance of natural lighting.





Guest Suite





THE AVENUE
REAL ESTATE GROUP



A bright and spacious two double bedroom, two-bathroom (one en-suite) apartment with high ceilings in a purpose-built block. This property is situated on West Hampstead favoured residential addresses and it is a very short walk to St John's Wood and Maida Vale.

Flooded with natural light throughout the property comprises a spacious reception room with an area to dine, a separate kitchen, two large double bedrooms with two recently refurbished bathrooms and a well maintained private communal garden.

Share Of Freehold








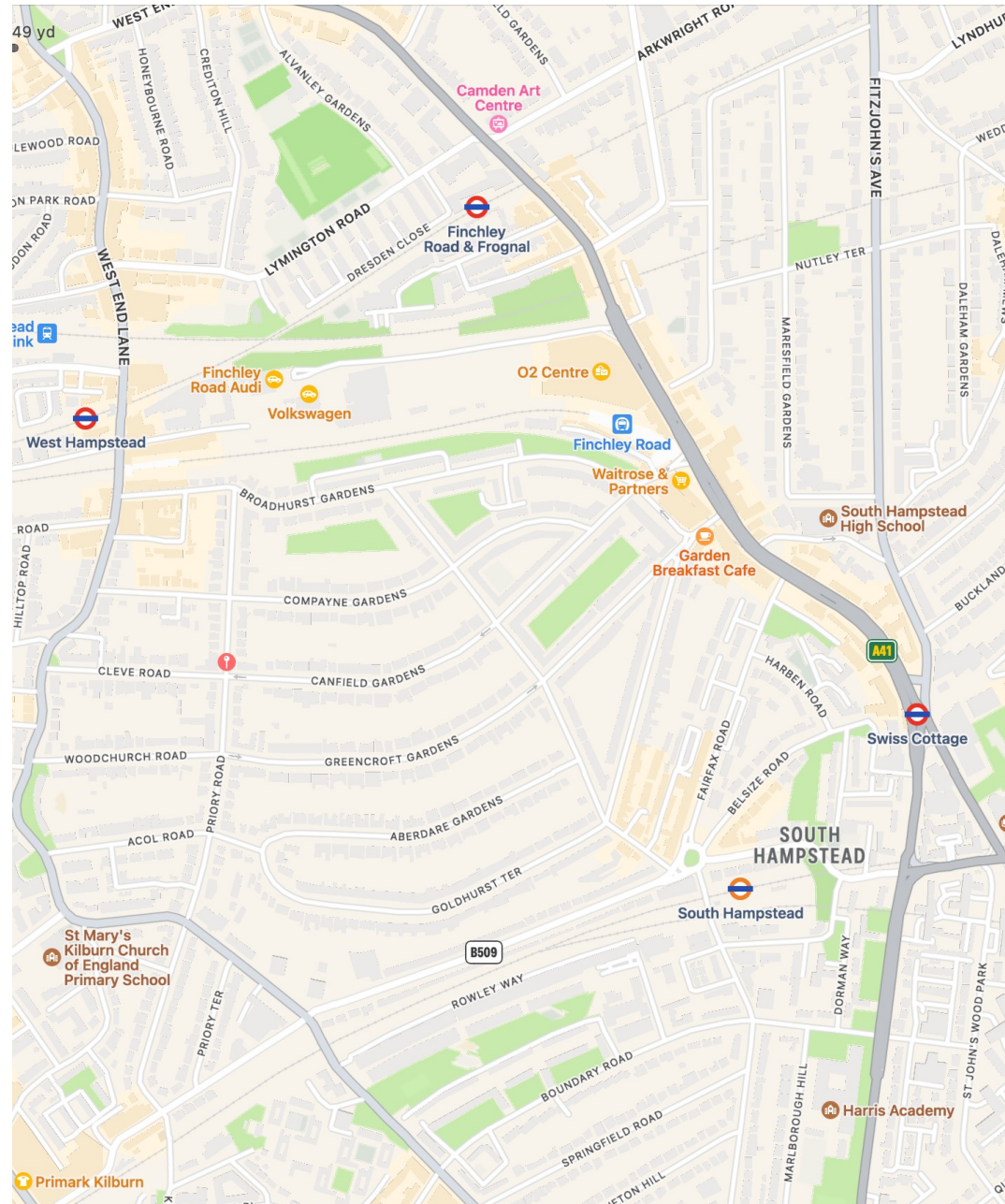
THE AVENUE
ESTATE GROUP

Location

This property is located on a very quiet neighbourhood in West Hampstead and has multiple shops, amenities, transport links and parks nearby such as: -

Amenities

	274, 139 & 189	2 Minutes
	West Hamstead	7 Minutes
	Regents Park	10 Minutes
	Hamstead Heath	10 Minutes
	Shops & Restaurants	5 Minutes




Contact



Jorge Gorroño

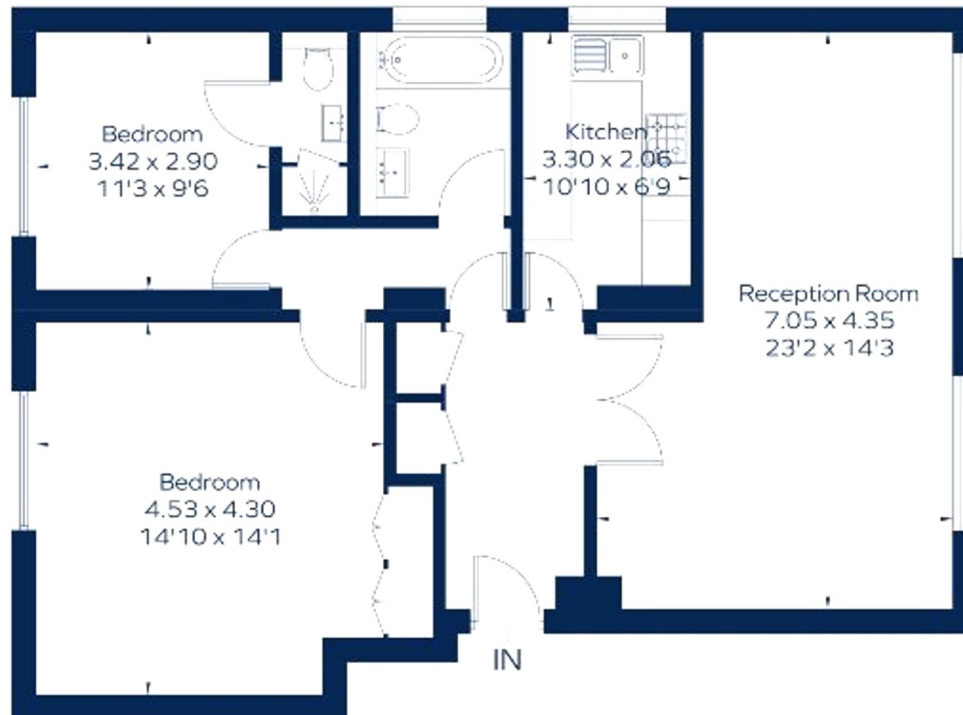
 Jorge@T-Avenue.com

 +44 (0) 7494705838

 www.t-avenue.com

Priory Road

Approximate Gross Internal Area = 895 sq. ft. (83.2 sq. m.)



Ground Floor



THE AVENUE
REAL ESTATE GROUP

85 Great Portland Street, W1W 7LT